

**MAY 22 - 28, 2023**

The Queens luxury real estate market, defined as all properties priced \$1M and above, saw 25 contracts signed this week, made up of 13 condos, and 12 houses. The previous week saw 26 deals. For more information or data, please reach out to a Compass agent.

**\$1,801,803**

Average Asking Price

**\$1,500,000**

Median Asking Price

**\$1,123**

Average PPSF

**2%**

Average Discount

**\$45,045,062**

Total Volume

**119**

Average Days On Market

64-23 Marathon Parkway in Little Neck entered contract this week, with a last asking price of \$3,690,000. Built in 2016, this house spans 4,539 square feet with 5 beds and 4 full baths. It features a large lot, a gourmet kitchen with high-end appliances and custom cabinetry, coffered ceilings throughout, white oak hardwood floors, a commercial home gym and in-ground pool, a decided home office, and much more.

Also signed this week was PH3C at 133-36 37th Avenue in Downtown Flushing, with a last asking price of \$3,122,915. This penthouse condo unit spans 2,156 square feet with 3 beds and 3 full baths. It features a large private roof deck, skyline and water views, wraparound private balconies, a custom-designed kitchen with high-end appliances, floor-to-ceiling double-paned glass walls, high ceilings, and much more. The building provides an indoor heated pool, tennis, a salt room and sauna, multiple gyms, a dog park, a library, parking, and many other amenities.

**13**

Condo Deal(s)

**0**

Co-op Deal(s)

**12**

Townhouse Deal(s)

**\$1,729,082**

Average Asking Price

**\$0**

Average Asking Price

**\$1,880,584**

Average Asking Price

**\$1,500,000**

Median Asking Price

**\$0**

Median Asking Price

**\$1,662,500**

Median Asking Price

**\$1,491**

Average PPSF

**N/A**

Average PPSF

**\$644**

Average PPSF

**1,174**

Average SqFt

**N/A**

Average SqFt

**2,920**

Average SqFt



### 64-23 MARATHON PKWY

Little Neck

Type	Townhouse	Status	Contract
SqFt	4,539	Beds	5
PPSF	\$813	Fees	\$1,765

Ask	\$3,690,000
Baths	4
DOM	66

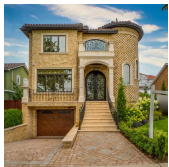


### 133-36 37TH AVE #PH3C

Flushing

Type	Condo	Status	Contract
SqFt	2,156	Beds	3
PPSF	\$1,449	Fees	\$4,919

Ask	\$3,122,915
Baths	3.5
DOM	445

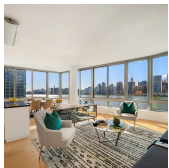


### 144-31 SOUTH DR

Whitestone

Type	Townhouse	Status	Contract
SqFt	3,570	Beds	4
PPSF	\$840	Fees	\$1,302

Ask	\$2,999,000
Baths	4.5
DOM	100



### 46-30 CTR BLVD #1105

Hunters Point

Type	Condo	Status	Contract
SqFt	1,653	Beds	3
PPSF	\$1,725	Fees	\$1,892

Ask	\$2,850,000
Baths	3
DOM	317



### 60 TENNIS PL

Forest Hills Gardens

Type	Townhouse	Status	Contract
SqFt	N/A	Beds	6
PPSF	N/A	Fees	\$1,208

Ask	\$1,999,000
Baths	4.5
DOM	284



### 219-16 PECK AVE

Oakland Gardens

Type	Townhouse	Status	Contract
SqFt	3,000	Beds	5
PPSF	\$660	Fees	\$1,133

Ask	\$1,980,000
Baths	3.5
DOM	34

Compass is a licensed real estate broker and abides by Equal Housing Opportunity laws. All material presented herein is intended for informational purposes only. Information is compiled from sources deemed reliable but is subject to errors, omissions, changes in price, condition, sale, or withdrawal without notice. No statement is made as to the accuracy of any description. All measurements and square footages are approximate. This is not intended to solicit property already listed. Nothing herein shall be construed as legal, accounting or other professional advice outside the realm of real estate brokerage.



### 30-70 29TH ST

**Type** Multihouse  
**Sqft** N/A  
**PPSF** N/A

**Status** Contract  
**Beds** 4  
**Fees** N/A

#### Astoria

**Ask** \$1,898,000  
**Baths** 2  
**DOM** 140



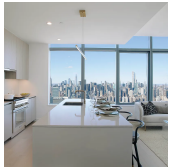
### 147-24 69TH RD

**Type** Townhouse  
**Sqft** 2,621  
**PPSF** \$715

**Status** Contract  
**Beds** 8  
**Fees** \$824

#### Kew Gardens Hills

**Ask** \$1,875,000  
**Baths** 4.5  
**DOM** 33



### 3 COURT SQ #3902

**Type** Condo  
**Sqft** 985  
**PPSF** \$1,798

**Status** Contract  
**Beds** 2  
**Fees** \$2,135

#### Hunters Point

**Ask** \$1,770,147  
**Baths** 2  
**DOM** N/A



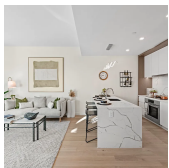
### 45-30 PEARSON ST #PH1B

**Type** Condo  
**Sqft** 957  
**PPSF** \$1,693

**Status** Contract  
**Beds** 2  
**Fees** \$1,638

#### Hunters Point

**Ask** \$1,620,000  
**Baths** 2  
**DOM** N/A



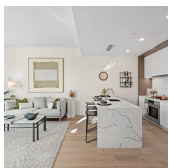
### 45-30 PEARSON ST #18C

**Type** Condo  
**Sqft** 947  
**PPSF** \$1,627

**Status** Contract  
**Beds** 2  
**Fees** \$1,588

#### Hunters Point

**Ask** \$1,540,000  
**Baths** 2  
**DOM** 4



### 45-30 PEARSON ST #17C

**Type** Condo  
**Sqft** 947  
**PPSF** \$1,621

**Status** Contract  
**Beds** 2  
**Fees** \$1,588

#### Hunters Point

**Ask** \$1,535,000  
**Baths** 2  
**DOM** 6

Compass is a licensed real estate broker and abides by Equal Housing Opportunity laws. All material presented herein is intended for informational purposes only. Information is compiled from sources deemed reliable but is subject to errors, omissions, changes in price, condition, sale, or withdrawal without notice. No statement is made as to the accuracy of any description. All measurements and square footages are approximate. This is not intended to solicit property already listed. Nothing herein shall be construed as legal, accounting or other professional advice outside the realm of real estate brokerage.



### 11-02 49TH AVE #9C

Hunters Point

Type	Condo	Status	Contract
Sqft	1,213	Beds	2
PPSF	\$1,237	Fees	\$1,812

Ask	\$1,500,000
Baths	2
DOM	26



### 5 47TH RD #1A

Hunters Point

Type	Condo	Status	Contract
Sqft	1,148	Beds	2
PPSF	\$1,303	Fees	\$1,613

Ask	\$1,495,000
Baths	2
DOM	22

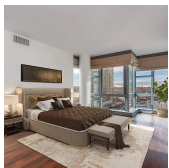


### 163-19 90TH ST

Rockwood Park

Type	Townhouse	Status	Contract
Sqft	4,113	Beds	7
PPSF	\$353	Fees	\$776

Ask	\$1,450,000
Baths	3.5
DOM	56

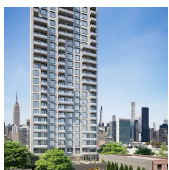


### 108-20 71ST AVE #7F

Forest Hills

Type	Condo	Status	Contract
Sqft	1,330	Beds	2
PPSF	\$1,087	Fees	\$1,521

Ask	\$1,445,000
Baths	2
DOM	59

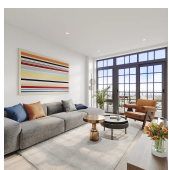


### 45-30 PEARSON ST #17D

Hunters Point

Type	Condo	Status	Contract
Sqft	873	Beds	2
PPSF	\$1,650	Fees	\$1,489

Ask	\$1,440,000
Baths	2
DOM	N/A



### 37-24 30TH ST #7B

Astoria

Type	Condo	Status	Contract
Sqft	947	Beds	2
PPSF	\$1,479	Fees	\$1,560

Ask	\$1,400,000
Baths	2
DOM	N/A

Compass is a licensed real estate broker and abides by Equal Housing Opportunity laws. All material presented herein is intended for informational purposes only. Information is compiled from sources deemed reliable but is subject to errors, omissions, changes in price, condition, sale, or withdrawal without notice. No statement is made as to the accuracy of any description. All measurements and square footages are approximate. This is not intended to solicit property already listed. Nothing herein shall be construed as legal, accounting or other professional advice outside the realm of real estate brokerage.

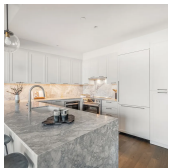


### 37-48 101ST ST

North Corona

Type	Townhouse	Status	Contract
Sqft	2,192	Beds	8
PPSF	\$638	Fees	\$685

Ask	\$1,399,000
Baths	2.5
DOM	189



### 107-06 QUEENS BLVD #6H

Forest Hills

Type	Condo	Status	Contract
Sqft	1,228	Beds	2
PPSF	\$1,128	Fees	\$2,245

Ask	\$1,385,000
Baths	2
DOM	418



### 45-30 PEARSON ST #11D

Hunters Point

Type	Condo	Status	Contract
Sqft	873	Beds	2
PPSF	\$1,576	Fees	\$1,456

Ask	\$1,375,000
Baths	2
DOM	N/A

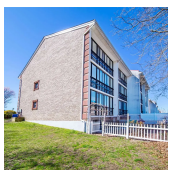


### 33-48 101ST ST

North Corona

Type	Townhouse	Status	Contract
Sqft	1,920	Beds	6
PPSF	\$703	Fees	\$589

Ask	\$1,350,000
Baths	3
DOM	35



### 114-79 DALIAN CT

College Point

Type	Townhouse	Status	Contract
Sqft	3,200	Beds	5
PPSF	\$418	Fees	\$783

Ask	\$1,339,000
Baths	4.5
DOM	48



### 40-19 78TH ST

Elmhurst

Type	Townhouse	Status	Contract
Sqft	1,844	Beds	5
PPSF	\$726	Fees	\$731

Ask	\$1,338,000
Baths	3.5
DOM	49

Compass is a licensed real estate broker and abides by Equal Housing Opportunity laws. All material presented herein is intended for informational purposes only. Information is compiled from sources deemed reliable but is subject to errors, omissions, changes in price, condition, sale, or withdrawal without notice. No statement is made as to the accuracy of any description. All measurements and square footages are approximate. This is not intended to solicit property already listed. Nothing herein shall be construed as legal, accounting or other professional advice outside the realm of real estate brokerage.



### 20-12 HAZEN ST

**Type** Townhouse  
**Sqft** 2,200  
**PPSF** \$568

**Status** Contract  
**Beds** 5  
**Fees** \$762

### Astoria

**Ask** \$1,250,000  
**Baths** 2  
**DOM** 46

---

Compass is a licensed real estate broker and abides by Equal Housing Opportunity laws. All material presented herein is intended for informational purposes only. Information is compiled from sources deemed reliable but is subject to errors, omissions, changes in price, condition, sale, or withdrawal without notice. No statement is made as to the accuracy of any description. All measurements and square footages are approximate. This is not intended to solicit property already listed. Nothing herein shall be construed as legal, accounting or other professional advice outside the realm of real estate brokerage.

---